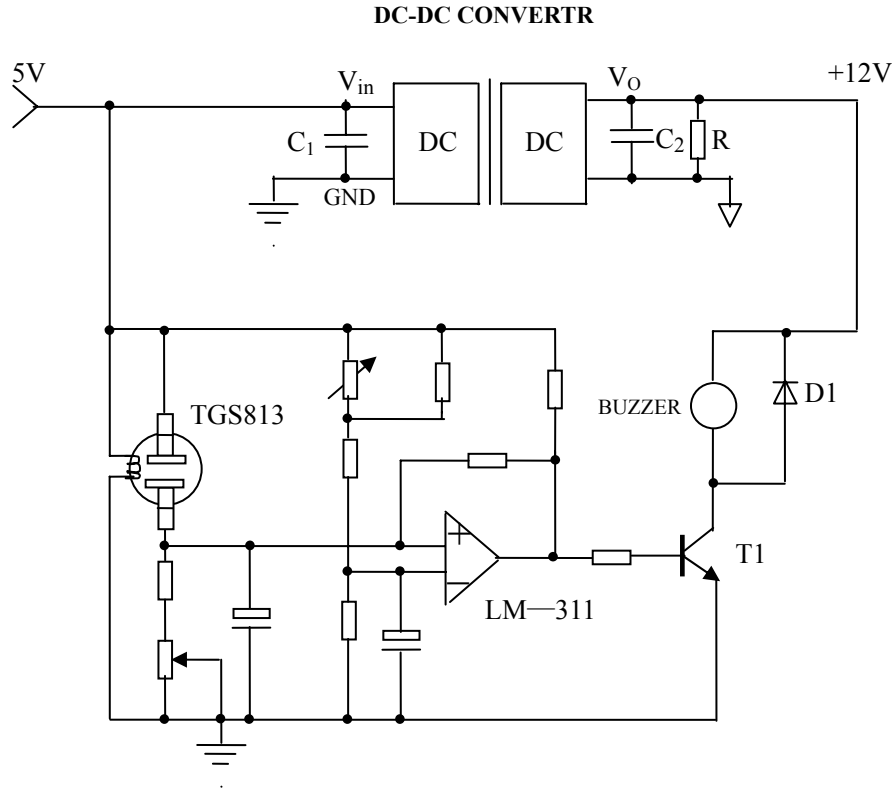


GAS ALARM SYSTEM APPLICATION



FEATURES

With heatertype gas-sensing component TGS813, schematic above being a gas alarm system circuit which has temperature and moisture compensating function. DC-DC module provides a stable, high reliability power source for the system.

DC-DC POWER MODULE SELECTION GUIDE

SYSTEM POWER SUPPLY	GENERAL APPLICATION		REGULATED APPLICATION		WIDE INPUT APPLICATION	
	1000VDC ISOLATION		1000VDC ISOLATION		1000VDC ISOLATION	
	PART NUMBER	PACKAGE	PART NUMBER	PACKAGE	PART NUMBER	PACKAGE
5V	B0515LS-1W B0515S-1W B0515LD-1W B0515D-1W B0515(X)T-1W	SIP MICRO SIP DIP MICRO DIP SMD	IB0515LS-1W IB0515LD-1W IB0515LT-1W	SIP DIP SMD	WRB0515CS-1W	SIP
12V	B1215LS-1W B1215S-1W B1215LD-1W B1215D-1W B1215(X)T-1W	SIP MICRO SIP DIP MICRO DIP SMD	IB1215LS-1W IB1215LD-1W IB1215LT-1W	SIP DIP SMD	WRB1215CS-1W	SIP
24V	B2415LS-1W B2415S-1W B2415LD-1W B2415(X)T-1W	SIP MICRO SIP DIP SMD	IB2415LS-1W IB2415LD-1W IB2415LT-1W	SIP DIP SMD	WRB2415CS-1W	SIP

NOTES:

7. Bxxxxx-1W is fixed input, isolated, unregulated single output series,
8. IBxxxxx-1w is fixed input, isolated, regulated single out put series.
9. WRBxxxxx-1W is wide input, isolated, regulated single output series.
10. For higher isolation applications, such as 3000VDC and 6000VDC, please select fixed input F and H series, regulated IF, IH series or wide input WRF series.

Notes:

- a. The application above is made while assuming operation voltage of the system is +12V. For +5V, +9V or +15V applications please choose Mornsun's corresponding products.
- b. To further reduce the power loss, please use low loss components.
- c. It is recommended that the capacitor C2 which attached to output of DC-DC modules does not exceed 2.2uF, otherwise the modules may have problem while starting.
- d. As the circuit has very low power consumption before alarm, for reliability concern it is recommended to connect a dummy load (about 10% of rated power) to output side of the module. When the system alarms, power consumption of the circuit will soar. So selecting module's power should take in consideration the maximum power consumption of the system when it alarms, and the dummy load should be in the range 10%~100% rated power.
- e. For special requirements please contact us:
Tel: (978)567-9610 or Fax: (978)567-9601
Website: <http://www.mornsunamerica.com> E-mail: sales@mornsunamerica.com