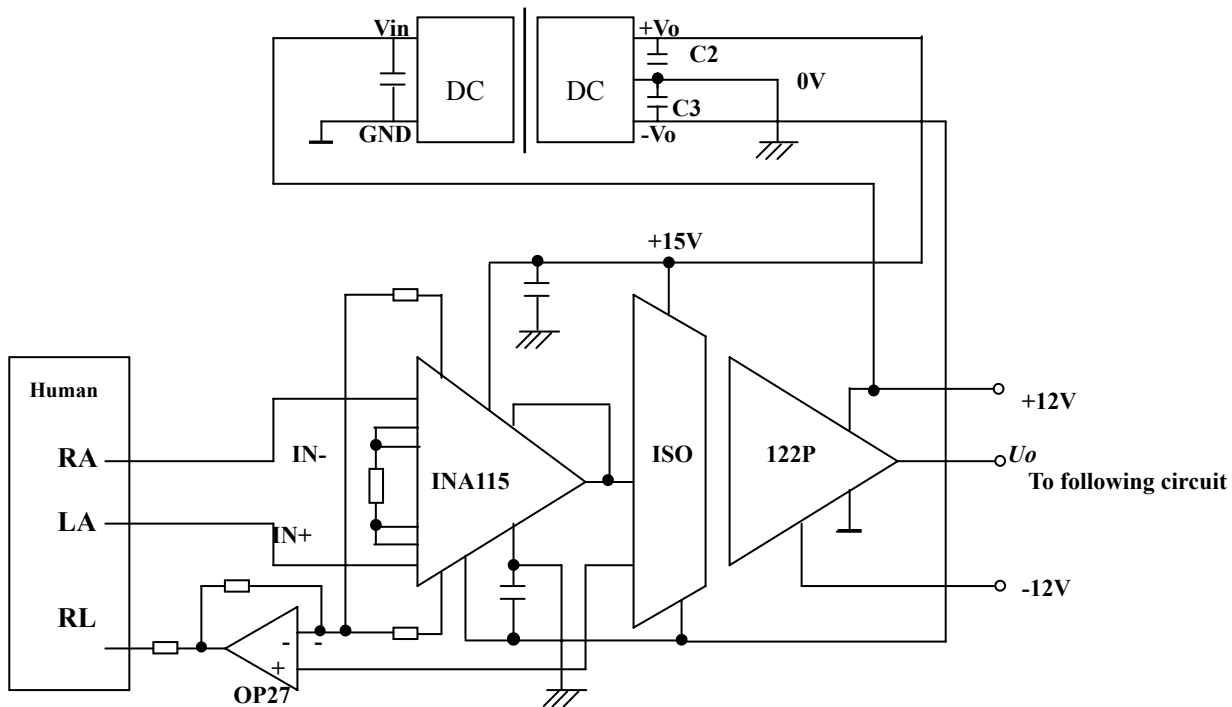


# ECG PREAMPLIFIER CIRCUIT APPLICATION

## DC-DC CONVERTER



### FEATURES

- a. As schematic above, this is a ECG examination circuit including a ISO122 and INA115. This circuit completely meets the requirements of medical equipments that, with high input impedance, tiny leakage current, high precision and high safety index.
- b. ISO122 transmits output signal to post amplifying circuit, achieves isolation and amplifying of input signal, output and power source. Using isolated DC-DC modules as power supply restrains surrounding EMI, eliminates ground loop. Here Mornsun's 6000VDC isolated series products are highly recommended. (its isolation capacitance is very low, equal or less than 10pF)

### DC-DC POWER MODULE SELECTION GUIDE

SYSTEM POWER SUPPLY	RECOMMENDED APPLICATION	
	6000VDC ISOLATION	
	PART NUMBER	PACKAGE
5V	G0515S-1W	SIP
	G0515D-1W	DIP
12V	G1215S-1W	SIP
	G1215D-1W	DIP
24V	G2415S-1W	SIP
	G2415D-1W	DIP

Notes:

- a. The application above is made while assuming operation voltage of isolation amplifier is +/-15V. For  $\pm 5V$ ,  $\pm 9V$  or  $\pm 12V$  applications please choose Mornsun's corresponding products.
- b. If the power consumption of load is big, please select Mornsun's 2Watt products.
- c. The capacitor C2 and C3 which attached to output of DC-DC modules could not exceed 1uF, otherwise the modules may have problem while starting.
- d. To further reduce the power loss, please use low LOSS components.
- e. For special requirements please contact us:

Tel: (978)567-9610 or Fax: (978)567-9601

Website: <http://www.mornsunamerica.com>

E-mail: [sales@mornsunamerica.com](mailto:sales@mornsunamerica.com)